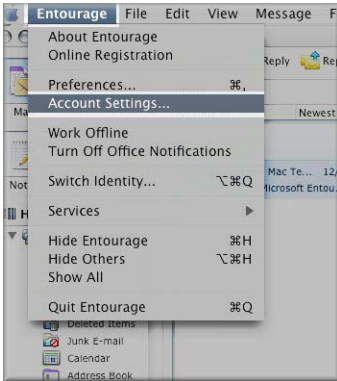


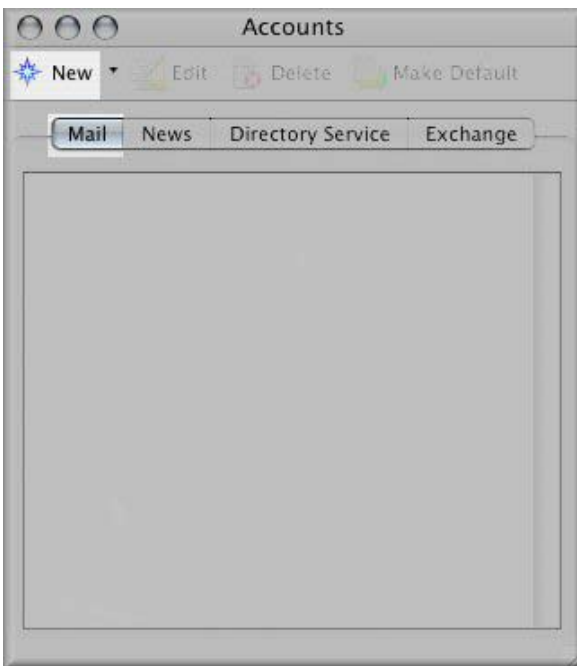
## Entourage

Open Entourage.

From the 'Entourage' menu, choose 'Account Settings'.



Click the 'Mail' button and click on 'New' button.

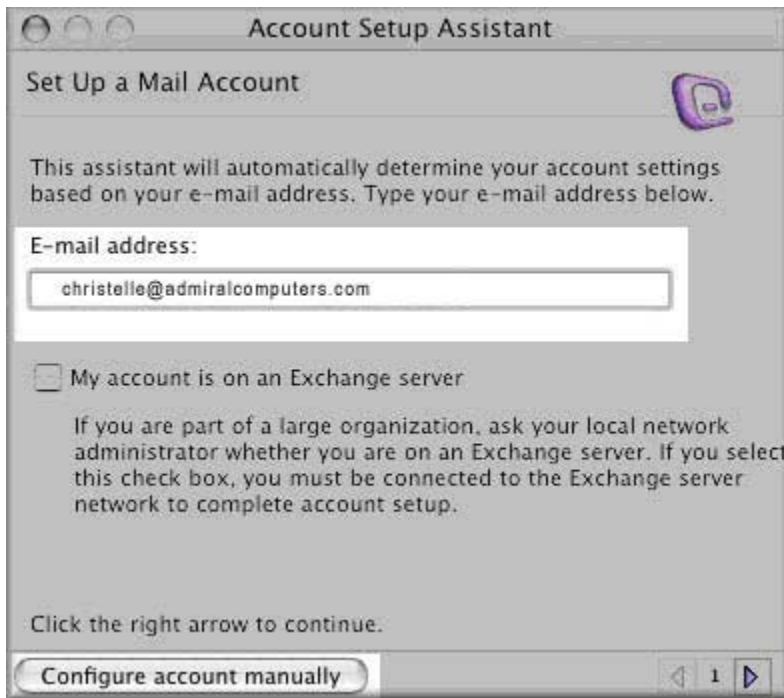


Enter the following:

Full name: (Your name as you want to display, when somebody receive your mail)

E-mail address

Click on 'Configure account manually'.



Enter your email password in the 'Password:' field (password that we supplied)  
Your POP and SMTP settings are the same

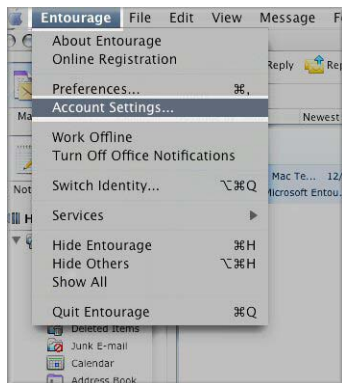


Click on 'Verify My Settings' to have Entourage test your settings.

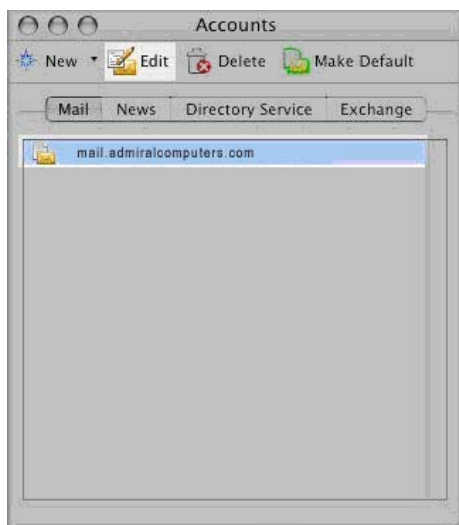


Enter a name for the 'Account Name' for Entourage to display.  
Click on the 'Finish' button.

To double check your settings:  
Go to the 'Entourage' menu, choose 'Account Settings'.



Highlight your account and click on the 'Edit' Button.



Click the 'Click here for advanced sending options' button.  
And check all your settings, here is a sample

Account name: mail.admiralcomputers.com

Include this account in my "Send & Receive All" schedule

**Personal information**

Name: Christelle Greven

E-mail address: christelle@admiralcomputers.com

**Receiving mail**

Account ID: christelle@admiralcomputers.com

POP server: mail.admiralcomputers.com

Password: \*\*\*\*\*

Save password in my Mac OS keychain

[Click here for advanced receiving options](#)

**Sending mail**

SMTP server: mail.admiralcomputers.com

[Click here for advanced sending options](#)

Cancel OK

Click on options, here you must select my server requires authentication, use same settings as incoming mail server. You don't have to change the override default SMTP Port' field keep it on port number 25.

SMTP service requires secure connection (SSL)

Override default SMTP port: 587

SMTP server requires authentication

Use same settings as receiving mail server

Log on using

Account ID: \_\_\_\_\_

Password: \_\_\_\_\_

Save password in my Mac OS keychain

Domain for unqualified addresses: \_\_\_\_\_

Click on "CLOSE" and then 'OK'.